



# OFFICE SPACE FOR NONPROFITS

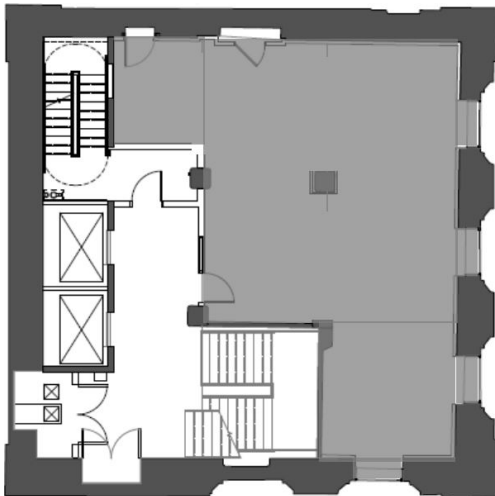
Chicago's North Lawndale Neighborhood • Private Space • Shared Amenities

## ABOUT THE TOWER

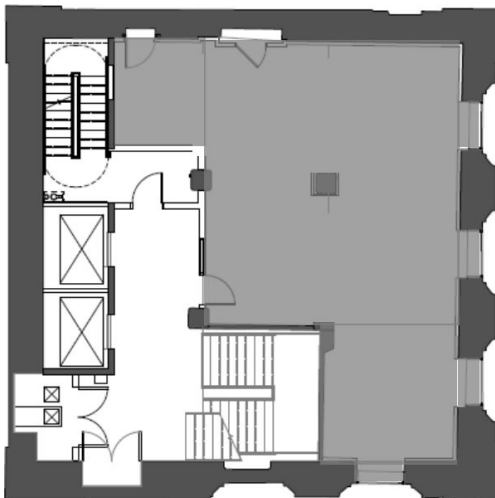
This 14-story building is located at the southwest corner of Homan Avenue and Arthington Street, just a few blocks south of I-290 and the Kedzie-Homan stop on the CTA Blue Line. Built in 1906 and listed on the National Register of Historic Places, it offers both functional work space and distinctive architecture. The top floor is available for tenant use upon request and is ideal for special events. The lower floors are occupied by a variety of nonprofits and offer an efficient layout combining office space with an open floor plan for a wide range of uses. Two elevators serve all floors, and ample parking is available.



6th Floor: 1,961 square feet



9th Floor: 1,977 square feet



## ABOUT THE AVAILABLE SUITES

906 S. Homan Avenue, Chicago, IL

### Rental Rates & Expenses

- Base rate: \$19 per square foot
- Utilities: Electricity, internet, and phone service paid by tenant

### Space Available

- 6th floor: 1,961 square feet (\$3,105/month)
- 9th floor: 1,977 square feet (\$3,130/month)

### Amenities

- Meeting space
- Conference room
- Kitchenette
- Cafe
- Parking
- Nonprofit neighbors

### Other Details

- 6th floor furniture may be available from previous tenant
- Restrooms located on the 4th, 7th, 10th, and 13th floors

**Potential Move-In Date: January 2023!**

**For More Information: Contact Kevin Sutton**  
at [ksutton@homansquare.org](mailto:ksutton@homansquare.org) or 773.265.4403