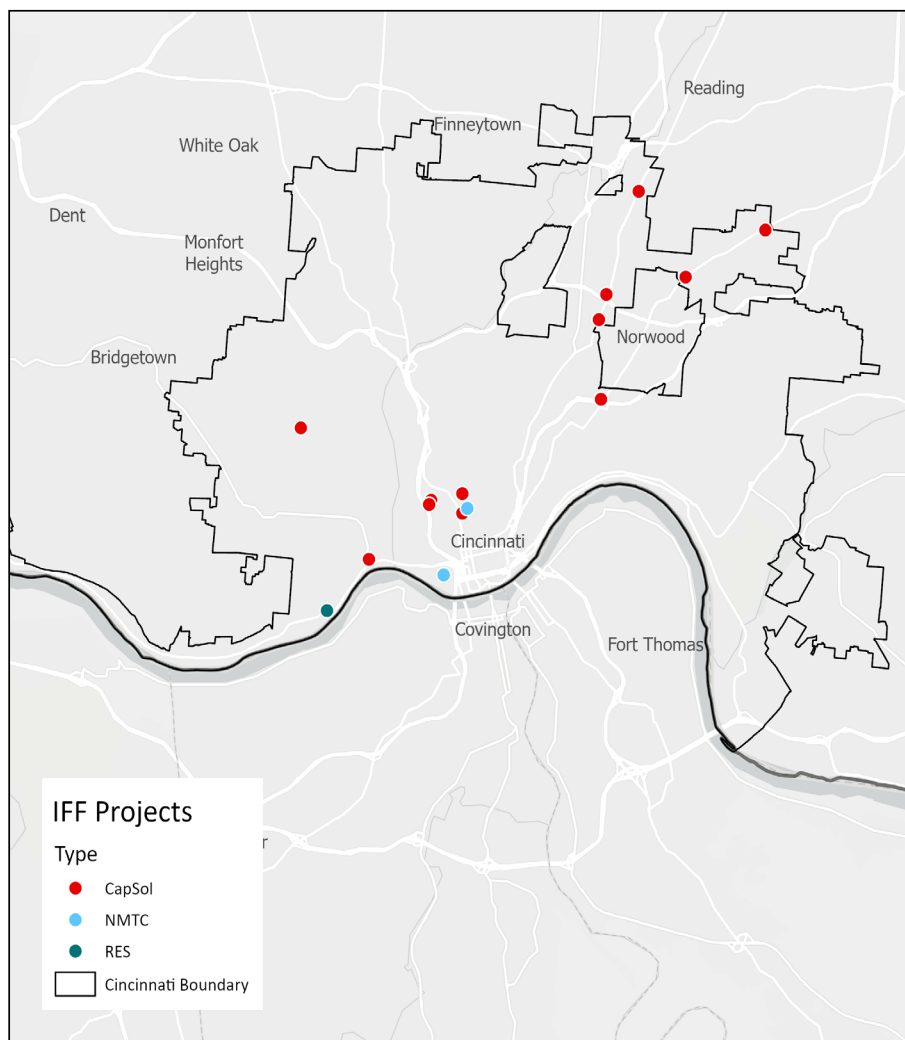




Cumulative Work in Cincinnati

2014 to January 2025



Loans	15 clients	22 loans	\$15,237,265.24 lent
New Market Tax Credit	2 clients	4 loans	\$12,870,000 allocated
Real Estate Solutions	1 client	1 project	1 completed

Customers

- 1719 Elm, LLC
- Aikido of Cincinnati
- Bi-Okoto Drum & Dance Theatre
- Easter Seals Tristate
- Hamilton County Land Bank Reutilization Corporation
- Kennedy Heights Art Center
- Market Square 1 Associates LLC f/k/a Market Square at Findlay Market
- Nassau Avenue Investments, LLC
- Opportunity Matters
- Raquan's Haven
- Rosemary's Babies
- Santa Maria Community Services
- Seven Hills Neighborhood Houses
- Shelterhouse
- SJO Kids, Inc. dba NewPath Child & Family Solutions
- The S.T.A.R. Chapter Foundation Inc.

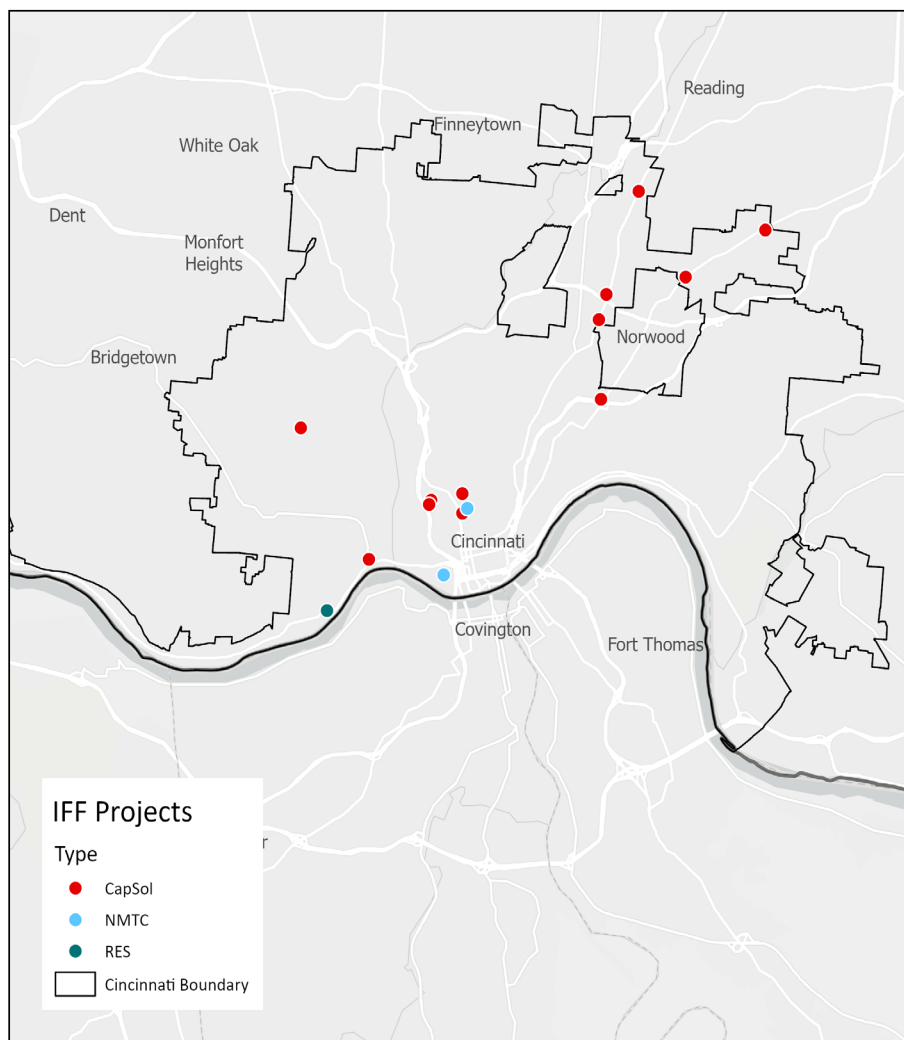
Read about
IFF's work
across Ohio
[here](#) or scan





Cumulative Work in Cincinnati

1990 to January 2025



Loans	15 clients	22 loans	\$15,237,265.24 lent
New Market Tax Credit	2 clients	4 loans	\$12,870,000 allocated
Real Estate Solutions	1 client	1 project	1 completed

Customers

- 1719 Elm, LLC
- Aikido of Cincinnati
- Bi-Okoto Drum & Dance Theatre
- Easter Seals Tristate
- Hamilton County Land Bank Reutilization Corporation
- Kennedy Heights Art Center
- Market Square 1 Associates LLC f/k/a Market Square at Findlay Market
- Nassau Avenue Investments, LLC
- Opportunity Matters
- Raquan's Haven
- Rosemary's Babies
- Santa Maria Community Services
- Seven Hills Neighborhood Houses
- Shelterhouse
- SJO Kids, Inc. dba NewPath Child & Family Solutions
- The S.T.A.R. Chapter Foundation Inc.

Cleveland Office

812 Huron Road East
Suite 490
Cleveland, OH 44115
216 354 4562

Columbus Office

172 E State Street
Suite 203
Columbus, Ohio 43215
614 484 1811



Read about
IFF's work
across Ohio
[here](#) or scan